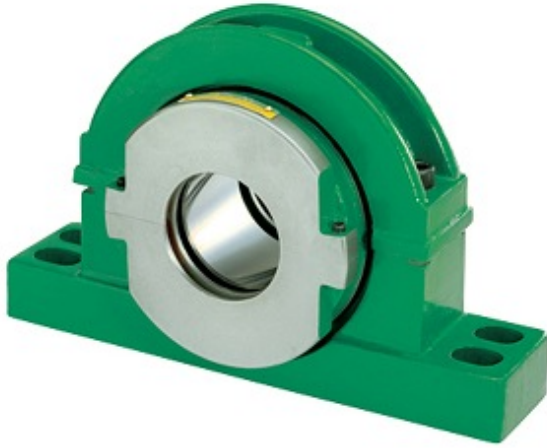




KOYO BEARING LIMITED

5.188 Inch | 131.775 Millimeter x 3.874 Inch |
98.4 Millimeter x 7.126 Inch | 181 Millimeter
TIMKEN LSE503BXHSNQATL Pillow Block
Bearings



LSE503BXHSNQATL Bearing 2D drawings and 3D CAD models

Bearing No. LSE503BXHSNQATL

| | |
|---------------------------|--|
| Category | Pillow Block Bearings |
| Inventory | 0.0 |
| Manufacturer Name | TIMKEN |
| Minimum Buy Quantity | N/A |
| Weight | 87.55 |
| EAN | 0013992060204 |
| Product Group | B04144 |
| Number of Mounting Holes | 4 |
| Mounting Method | Clamp Collar |
| Housing Style | 4 Bolt Pillow Block |
| Rolling Element | Cylindrical Roller Bearing |
| Housing Material | Cast Iron |
| Expansion / Non-expansion | Expansion |
| Mounting Bolts | 24 Millimeter |
| Relubricatable | Yes |
| Insert Part Number | LSE503BX |
| Seals | Triple Lip Labyrinth |
| Housing Configuration | 2 Piece Split |
| Inch - Metric | Inch |
| Other Features | Single Row Light Duty With Support Wide Inner Ring |
| Category | Pillow Block Bearings |
| UNSPSC | 31171511 |
| | |



KOYO BEARING LIMITED

| | |
|-------------------------------|---|
| Harmonized Tariff Code | 8483.20.40.80 |
| Noun | Bearing |
| Keyword String | Pillow Block |
| Manufacturer URL | http://www.timken.com |
| Weight / LBS | 192.85 |
| Bolt Spacing Maximum | 0 Inch 0Millimeter |
| Bolt Spacing Minimum | 0 Inch 0Millimeter |
| Nominal Bolt Center to Center | 19 Inch 482 Millimeter |
| D | 3.874 Inch 98.4 Millimeter |
| B | 7.126 Inch 181 Millimeter |
| d | 5.188 Inch 131.775 Millimeter |
| Actual Bolt Center to Center | 19 Inch 482Millimeter |
| Shaft Size | 5-3/16 in |
| Seal Type | Aluminium Triple Labyrinth |
| Bearing Type | Split Cylindrical Expansion Type |
| Support Type | Two-Bolt Plummer Block |
| Series Type | Light Series |
| Pillow/Plummer Block Style | Split Cylindrical Housed Unit - Angled |
| Bolt Size | 2 x M30 |
| Dimension H | 160 mm |
| Dimension H2 | 369 mm |
| Dimension J | 450 mm |
| Dimension L | 530 mm |
| Dimension M | 160 mm |
| Housing Width | 6.6 in |
| Cr - Dynamic Load Rating | 94869 lbf |
| Cor - Static Load Rating | 131513 lbf |
| Maximum Speed | 1570 rpm |



KOYO BEARING LIMITED

| | |
|------|---|
| Note | This product line was formerly known as “ Revolvo ” |
|------|---|