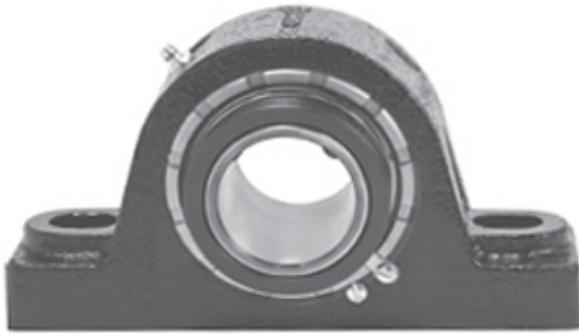




KOYO BEARING LIMITED

2.188 Inch | 55.575 Millimeter x 5.75 Inch |
146.05 Millimeter x 2.5 Inch | 63.5 Millimeter
REXNORD AMA5203 Pillow Block Bearings



Bearing No. AMA5203

AMA5203 Bearing 2D drawings and 3D CAD models

Category	Pillow Block Bearings
Inventory	0.0
Manufacturer Name	REXNORD
Minimum Buy Quantity	N/A
Weight	9.08
EAN	0698210946753
Product Group	M06288
Number of Mounting Holes	2
Mounting Method	Concentric Collar
Housing Style	2 Bolt Pillow Block
Rolling Element	Spherical Roller Bearing
Housing Material	Cast Iron
Expansion / Non-expansion	Non-expansion
Mounting Bolts	5/8 Inch
Relubricatable	Yes
Insert Part Number	5203U
Seals	Heavy Contact
Housing Configuration	1 Piece Solid
Inch - Metric	Inch
Other Features	Double Row Double Collar Two Open Auxiliary End Cap With Set Screw
Long Description	2 Bolt Pillow Block; 2-3/16" Bore; 2-1/2" Base to Center Height; Concentric Collar



KOYO BEARING LIMITED

	Mount; Spherical Roller Bearing; Relubricatable; Cast Iron; Heavy Contact; Non-expansion
Category	Pillow Block
UNSPSC	31171511
Harmonized Tariff Code	8483.20.40.80
Noun	Bearing
Keyword String	Pillow Block
Manufacturer URL	http://www.rexnord.com
Manufacturer Item Number	AMA5203
Manufacturer Internal Number	6894675
Weight / LBS	15.8
B	2.5 Inch 63.5 Millimeter
Nominal Bolt Center to Center	6.8 Inch 171.5 Millimeter
Bolt Spacing Minimum	0 Inch 0Millimeter
D	5.75 Inch 146.05 Millimeter
Bolt Spacing Maximum	0 Inch 0Millimeter
d	2.188 Inch 55.575 Millimeter
Actual Bolt Center to Center	6.8 Inch 171.5Millimeter